



# District® Women's Featherweight French Terry™ Long Sleeve Crewneck DT672

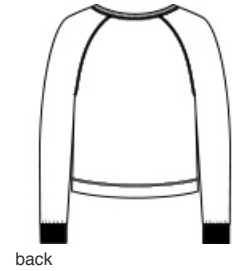
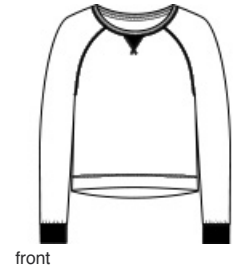


A vintage-inspired crewneck designed with the casual ease of French terry.

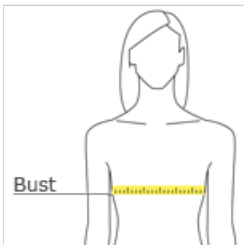
- 4.5-ounce, 70/30 combed ring spun cotton/poly French terry, 40 singles
- Rib V patch at neck
- Raglan sleeves
- 2x1 rib knit neck and cuffs
- Subtle high-low hem
- Tear-away label

**CARE INSTRUCTIONS**

Machine Wash Cold With Like Colors. Do Not Bleach.  
Tumble Dry Low. Cool Iron If Necessary.



**HOW TO MEASURE**



**BUST**  
Measure under the arm and around the fullest part of the bust with arms down, keeping tape horizontal.

**SIZE CHART**

|      | XS    | S     | M     | L     | XL    | XXL   | 3XL   | 4XL   |
|------|-------|-------|-------|-------|-------|-------|-------|-------|
| Size | 2     | 4/6   | 8/10  | 12/14 | 16/18 | 20/22 | 24/26 | 28/30 |
| Bust | 32-34 | 35-36 | 37-38 | 39-41 | 42-44 | 45-47 | 48-51 | 52-55 |

**COLOR INFORMATION**



Black  
PMS BLACK C



Flint Blue Heather  
PMS 4138C



Gardenia  
PMS NO MATCH



Light Heather Grey  
PMS COOL GRAY 8C



Nostalgia Rose  
Heather  
PMS 5005C



Washed Coal  
PMS NO MATCH